

**We shape the world
to fit your profile.**

Projects and Machinery



Our Mission

To deliver **high-quality services** and enable our customers to focus on their core business.

We offer **innovative, sustainable and tailor-made solutions beyond logistics** with one common approach, global and local.

Ahlers Core Services

- End-to-end sustainable supply chain solutions. Licensed customs broker.
- Warehouses in several regions in Russia, bonded warehouse in Saint Petersburg.
- Management of complex global projects, tailor-made with a dedicated team.
- Secured transport of high-valuable or theft-sensitive goods.
- Integrated logistics solutions through trade facilitation and after-sales services.
- Innovative smart data tools for supply chain visualization and optimization.



How do we do this?

- **Dedicated team**, understanding your **local and global needs**.
- Our **vast expertise** in CIS and Asia markets.
- Provide the best charter solutions based on your requirements.
- High-level **technical support** and economical **tailor-made solutions**.
- On-Time, On-Budget, On-Track **project management**.



Ahlers Projects and Machinery logistics manages complex global projects, tailor-made, with a clear scope and dedicated team.

Jeroen De Ryck,
Business Unit Director Projects and Machinery, Ahlers



25 years+ specialized knowledge in strategic markets



International forwarding and licensed customs broker



In-house warehousing operations



Smart, innovative, data analytics tools



A dedicated team of experts



What do we offer?

Manage complex global projects, tailor-made, with a clear scope and dedicated team

Our Projects & Machinery division stems from our longstanding, agency-activities tradition for the main breakbulk lines where we encountered a lot of oversized and heavy cargo.

However, projects do not only consist of this kind of equipment. More and more cargo is designed to fit into containers. **Hence, we focus on the A-Z management of projects**, in every aspect: transportation planning, customs clearance, and documentation, assisting in obtaining lower or zero import duties or taxes, monitoring of cargo and/or contact with the different suppliers, and the final receiver.

We support our customers in preferred geographical regions with a vast network of dedicated partners specialized in project logistics.

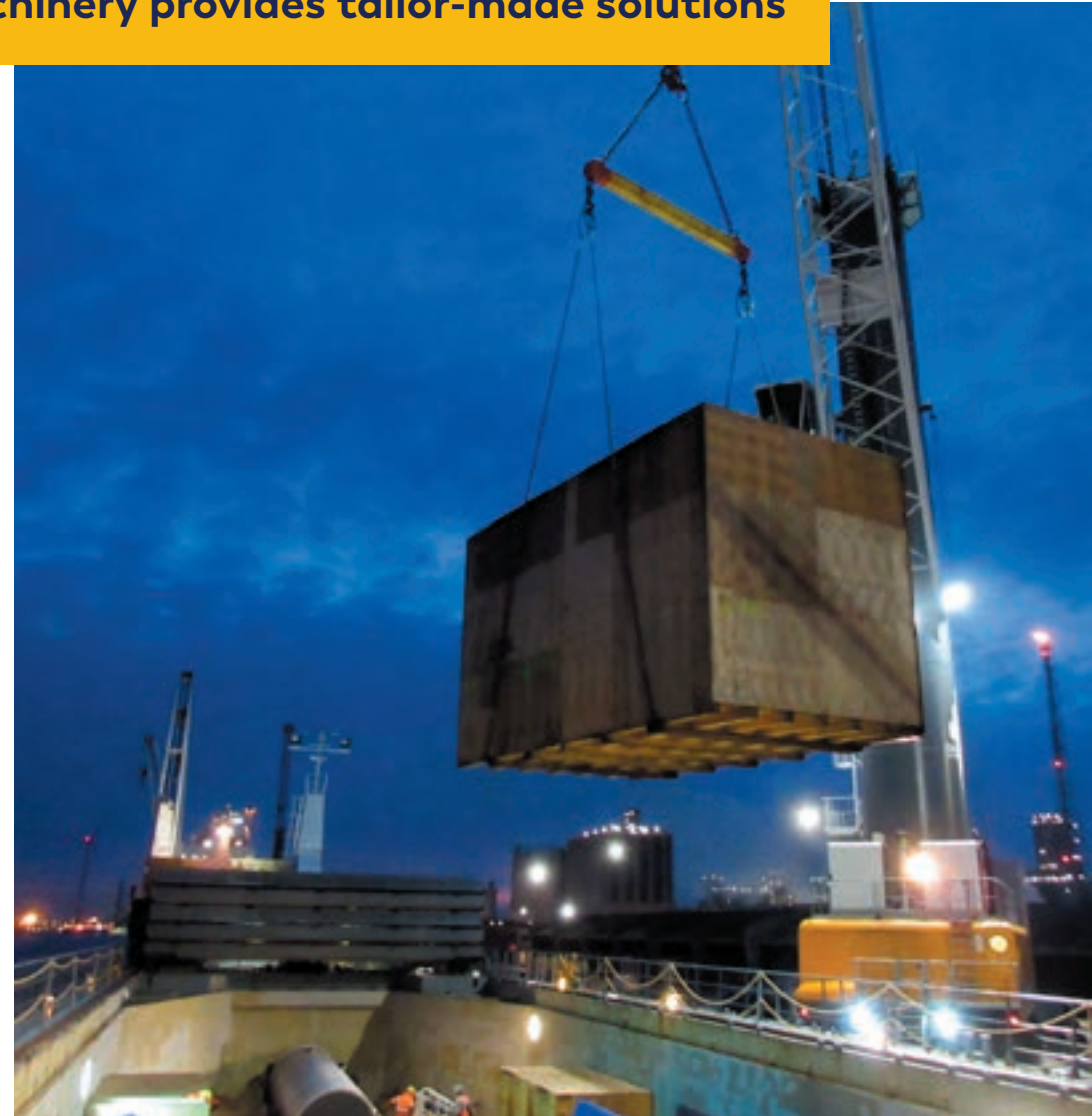
Project Cargo

We have a proven track record of managing complex global projects, tailor-made, with a clear scope and dedicated team. We strive for optimal solutions for every type of cargo and destination.

Ahlers projects and machinery provides tailor-made solutions

- We build, together with our clients, a customized solution from the initial planning and budgetary phase to the final delivery and facility start-up.
- We control your entire project supply chain, through our network of own offices and carefully selected partners, and with our team of experts in project logistics.
- Whether a heavy lift piece or a small box of nuts and bolts, every package is as important to make your project successful.

Supporting your projects from concept to completion, all over the world.





Machinery and Equipment

End to end tailor-made multimodal solutions for your machinery and mining equipment logistics.

Besides projects, we handle yearly around 600-700 units of mining equipment (excavators, dump trucks, ...) of the well-known brands, mostly ex China into the CIS, which gives us broad experience in OOG-rail transport and trucking along the new Silk Road.

Whether it is using the New Silk Route or transporting by landing crafts in Indonesia, Ahlers has the right solution for transporting your heavy machinery and mining equipment.



Multi-Modal Deliveries by the New Silk Road

Road, rail, inland waterways from Europe and China into CIS

We move heavy machinery, such as dump trucks, excavators, bulldozers, skid steer loaders and much more via intermodal solutions to and from all over the world. At strategic locations we can off and onload on barge, truck, rail, whatever is needed.

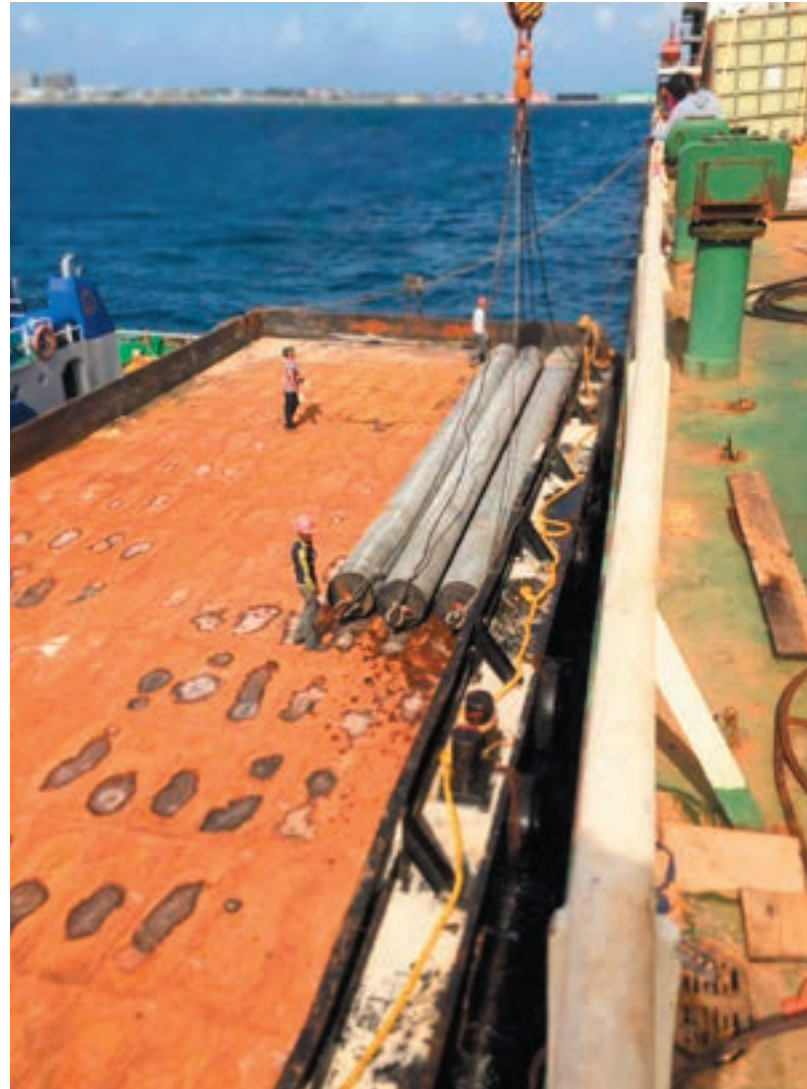


Intra-Asia Deliveries

Linking Asian countries with a door-to-door shipment of project cargo

Trade Lanes

- Thailand/China > Vietnam (plant/industrial equipment)
- China > India (plant/industrial equipment)
- India > Japan (steel plant equipment)
- Vietnam > Japan (steel plant equipment)
- China > Japan (steel plant equipment)
- Indonesia > Hong Kong (concrete pressure pipes)



Chartering Desk

Finding the right vessel for your cargo

Our global chartering desk (based in Singapore) works very closely with our regional offices worldwide ensuring that for each cargo, they find the most suitable vessels on the market.

Besides the match-making role, they also support the group by keeping a very close eye on the market trends, bunker prices, performance of different carriers, and giving legal advice related to charter parties, etc.

Value-added services machinery shipments

Supporting your projects from concept to completion all over the world

- From warehousing, storage, to surveys
- Removal of wheels or buckets for transport optimization
- Protection or removal of fragile parts or theft-sensitive components
- Project logistics chains, transshipping heavy goods
- Transporting goods with excess dimensions or weight
- Customs brokerage & Compliance
- Packing, Stuffing & Lashing



Project Services

- A-Z project management
- Multimodal door-to-door transportation
- In-house Chartering Desk
- On-site project supervision
- Route surveys
- Dismantling and erection
- Project KPI dashboards - Track and trace
- Customized reporting
- Customs services and documentation



Classification Decisions

Guide you through a complicated process saving time and resources

- Licensed customs broker in Russia, with over 25 years expertise
- In-house customs and legal specialists
- We work independently with suppliers to obtain the necessary technical information about each component of the technological equipment.
- Understanding the practical requirements of the customs authorities concerning documentation needed to submit the application for the Classification Decision
- Close follow up with the Federal Customs Office of the Russian Federation to understand the status of the application and to ensure timely issuance of the Classification decision.



About Ahlers

Ahlers was established in 1909 in Antwerp, Belgium.
Headquartered in Antwerp, Belgium

Where we are

- Western Europe
- Eastern Europe, Baltics & Ukraine
- Russia & Central Asia
- South East Asia
- China
- India



Why choose Ahlers

- Rely on 111 years' expertise with global established teams
- Local expertise as an importer- and exporter of record
- A transparent process fully compliant with all import laws of the importing countries
- Long term strategic client partnerships
- Flexibility & hands-on approach
- Execution per the highest quality and safety standards
- CIS and China project logistics to worldwide



**TAILOR-MADE
SOLUTIONS**



**CUSTOMER
CENTRIC**



**DEDICATED
TEAM**



ANALYTICS



EXPERTISE

Solutions beyond logistics

These are jobs for people with specific qualities, but one thing is sure: they must be experts with a hands-on approach.

We always strive for optimal solutions whether it is a container or a breakbulk shipment, heavy lift handling or out of gauge services.

Moreover, we take care of your door-to-door delivery of heavy machinery, rolling stock and mining equipment.

Since 1909, Ahlers has been helping clients with logistics solutions all over the world. With 650 employees in 3 regions (Europe, CIS, Asia), providing state-of-the-art logistics and tailor-made solutions. We enable our customers to stay focused on their core business by creating and managing innovative solutions that add value and solve their supply chain challenges in complex markets.

Moving hundreds of tons of machinery and equipment through multiple countries via road, rail, sea, or air to the most remote area's.



Ahlers headquarters

Noorderlaan 139 – B-2030 Antwerp – Belgium

Phone: +32 3 543 72 11

Fax: +32 3 542 00 23

E-mail: info@ahlers.com

www.ahlers.com



Questions?

Jeroen De Ryck

Director of Projects & Machinery Division

jeroen.de.ryck@ahlers.com

+32 3 543 72 11

