



# Ahlers Logistics

## Bonded Warehousing

Convenient all-round service for import and export in Eastern Europe & Central Asia

### Customs Advantage

- No complex return procedures or loss of import duties and VAT on returned or unsold goods
- Simplified procedures: bundled declarations
- Comply with labeling marking requirements

### Commercial Advantages

- Improved cash flow: duty and VAT payments are deferred until goods are sold
- Sale of returned or unsold goods
- Faster delivery
- Creating a strategic stock



For business looking to trade in Eastern Europe & Central Asia, local expertise is simply a must. Bonded warehouse management is the key to your supply chain performance.

In the past 30 years, Ahlers Logistics became an authority in opening Eastern European and Central Asia markets to foreign companies. To serve our customer base even better, we are licensed to execute bonded warehousing activities, through which we give our exporters an extra opportunity to enter these markets. Getting your goods stored in bonded warehouses is easy with Ahlers Logistics.



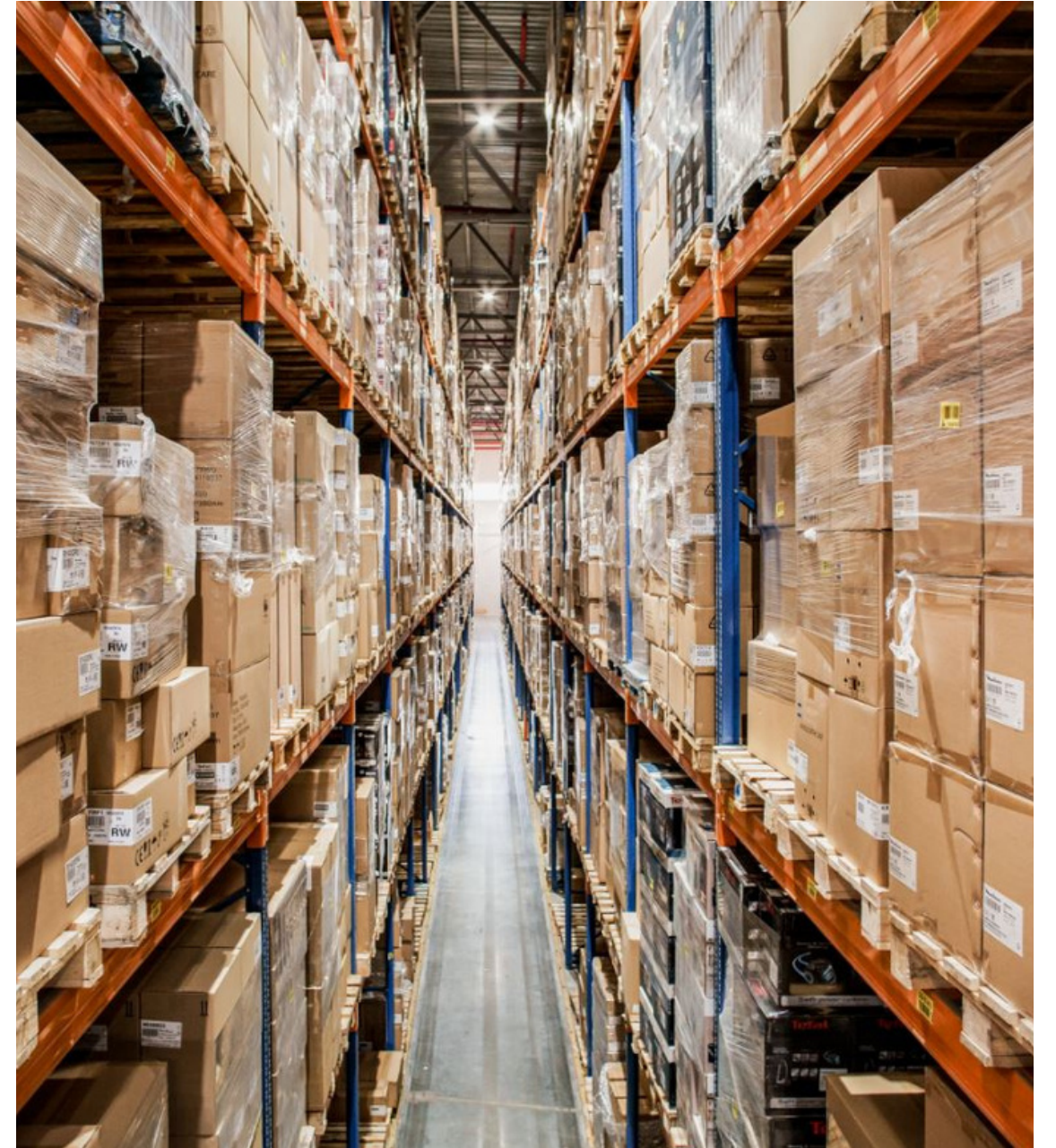
## Long-Term Option

A bonded warehouse is a solution for long-term storage and deferring duties until your goods leave the warehouse. You may want to store your goods until there is an increase in demand for the goods or wait for the best moment to make a deal. You do not need to arrange import clearance for all your goods at once. This is especially convenient for slow-moving item such as spare parts or high-value goods. Goods can be stored for 3 years (if a product has a limited shelf life, it must leave the warehouse 180 days before its due date), there is no rush on paperwork, payment, or inspection.



**Our bonded warehouse facilities provide government supervision and security for goods before payment of duty.**

- Ahlers Logistics treats the goods as if they were our own, with the most exceptional care. We offer state-of-the-art methods like live security cameras, barcoding systems, and inventory systems that can guarantee that all goods stored are well documented and preserved.
- All the information you need on stock status is available at your fingertips thanks to our warehouse management system, which was designed to meet specific challenges of logistics operations in Eastern Europe and Central Asia.



## Duty Deferment

- Ahlers Logistics helps you to bring your goods and import them into Eastern Europe & Central Asia, providing smooth and easy customs clearance.
- Our experts know like no other how complex these markets are and are here to help build your business.
- Our local specialists are well-positioned and experienced in transport and DDP (delivery duty paid) deliveries to Eastern Europe & Central Asia. They know procedures, regulations and up-to-date on the latest customs requirements.

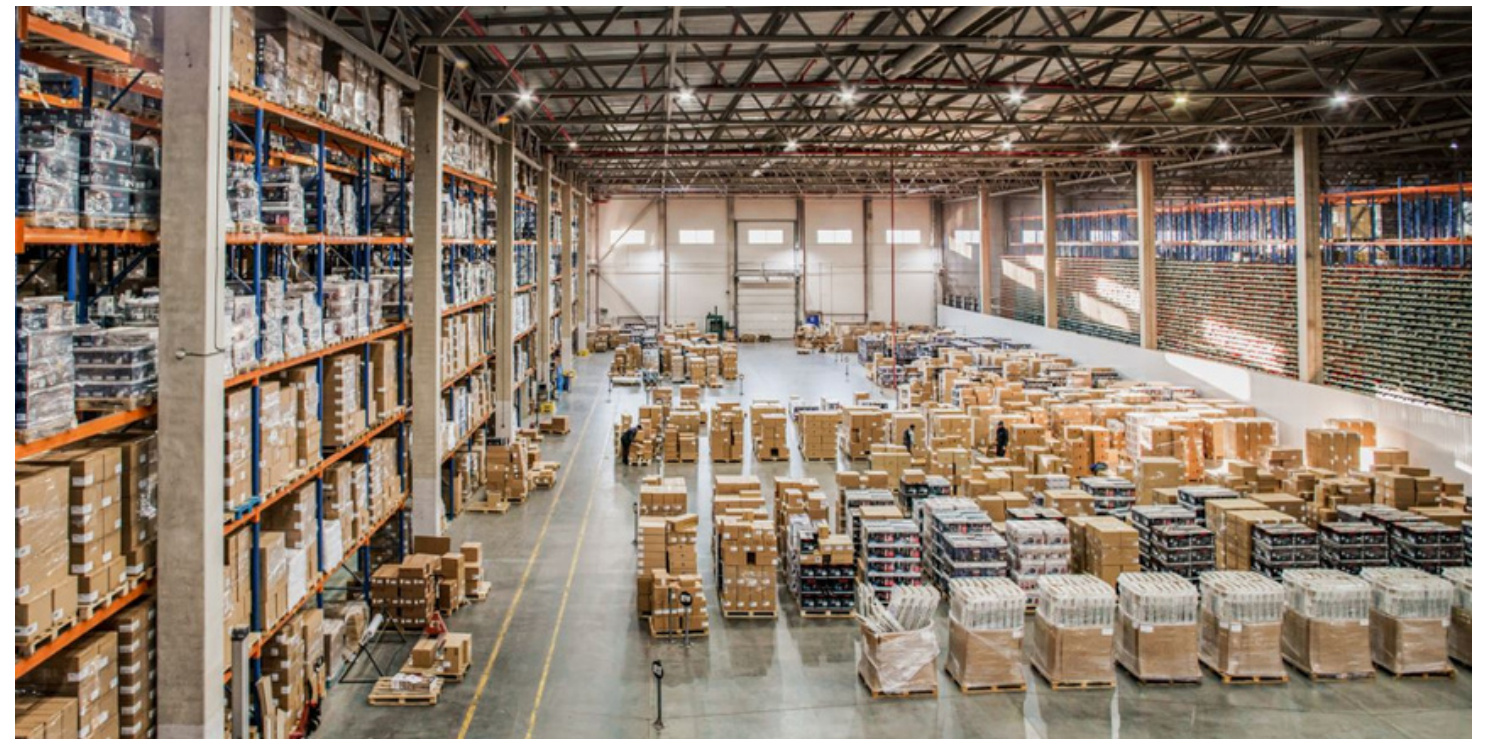
## Compliance

- Ahlers Logistics makes sure the goods are in line with local legislation to enter the market, for example by applying the proper labeling.
- A task that is best performed at the last stage of the supply chain to simplify the production and shipment process.
- Our electronic data system notifies you of the transfer of preliminary information about imported goods to customs.



## Goods Processing

- With the permission of the customs authority, you can perform several operations with the goods (sorting, (re-)packaging, etc.).
- You can carry out operations without customs permission in order to ensure the safety of the goods, without changing their condition, for example, drying and airing.



### **Ahlers Logistis is your strategic bonded warehouse partner in Eastern Europe & Central Asia**

- Consignment stock
- Simplified stock-in and stock-out procedures
- Added value for e-commerce
- Customs clearances in key regions
- Delivery services
- Certification and registration services
- Warehousing and value-added services
- Local distribution to distributors and retailers
- After-sales services return of goods (RMA)
- 30 years+ experience in Eastern Europe & Central Asia

## CONTACT US

Ahlers Logistics  
Noorderlaan 139  
2030 Antwerpen, Belgium

[Didier.Duponselle@ahlers.com](mailto:Didier.Duponselle@ahlers.com)

